

LANGUAGE COMPETENCY ASSESSMENT POLICY

Date: February 16, 2023	Policy ID:	Status: NEW
Reviewed Date: NA	Revised Date: NA	Retired Date: NOT APPLICABLE

Purpose

The *Language Competency Assessment policy* concerns candidates applying as Members In-Training or for Professional Engineer (P.Eng.) and Professional Geoscientist (P.Geo.) designations. This policy aims to ensure that all candidates possess adequate language skills in English or French, which are essential for effective communication within the professions and to uphold the integrity of engineering and geoscience practices.

Policy Framework¹

The Language Competency Assessment framework is as follows:

1. Competency-Based Assessment Model
 - a. The policy integrates the Competency-Based Assessment model.
2. Early-Stage Feedback
 - a. P.Eng. & P.Geo. supervisors and APEGNB volunteer assessors may provide initial feedback on the candidate's language proficiency during the early stages of the application process.
3. Professional Assessment Pathway
 - a. If language abilities are deemed unsatisfactory, a fair and unbiased professional assessment will be conducted to ascertain the candidate's language skills.
4. Reduced Barriers
 - a. The policy ensures that candidates with sufficient language skills face no additional requirements, thereby lowering entry-to-practice barriers.

Language Competency for Members-in-Training (MITs)

MITs seeking registration must provide a minimum score of CLB 7 or equivalent if their primary language of education and work is not English or French. See Appendix B for Language Test Score Categories. MITs must still adhere to the Competency-Based Assessment framework when applying for P.Eng. or P.Geo. designation.

Review and Revision

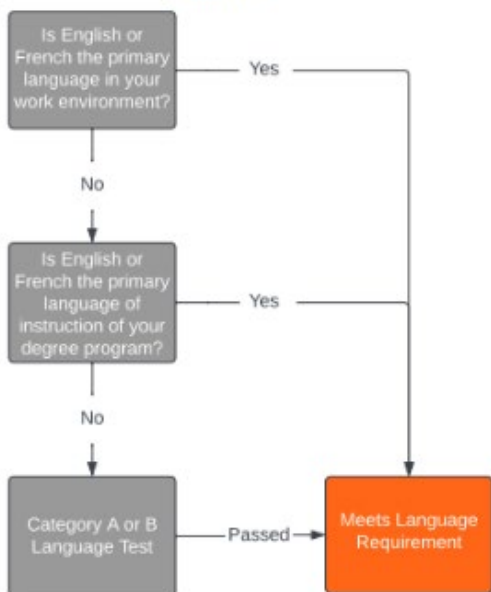
The Language Competency Assessment policy will be reviewed periodically to ensure its effectiveness and relevance. Necessary revisions will be made to align with changing industry standards and best practices.

APEGNB remains committed to promoting fairness, professionalism, and inclusivity within the professions it serves. This policy underscores the organization's dedication to maintaining high standards of language competency among its members while embracing linguistic diversity.

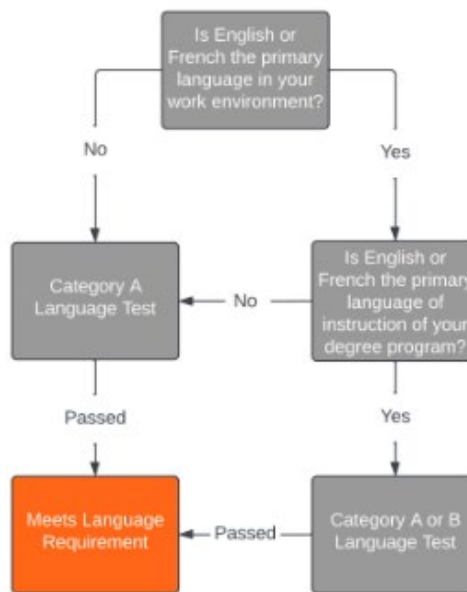
¹ Please see Appendix A for the full framework.

Appendix A –APEGNB Language Assessment Framework

All Communication Competencies assessed at 3.0 or above



One or more Communication Competencies assessed below 3.0



Appendix B –Language Test Score Categories and Minimum Acceptable Scores

Category A	Reading	Writing	Listening	Speaking
CAEL (English)	70			
IELTS (English)	6.5	6.5	7.5	6.5
TOEFL	IBT=100-112, PBT=600-624, CBT=250-262			
CLB (English & French)	8	8	8	8
TCF Canada (French)	499-523	12-13	503-522	12-13
TEF Canada (French)	233-247	349-370	280-297	349-370
Category B	Reading	Writing	Listening	Speaking
Duolingo (English)	120-125	140-145	120-125	120-125
GNB (English & French)	Advanced	Advanced	Advanced+	Advanced+